

# Installation Instructions For W100 EPROM

The following instructions are to be performed only by a qualified electronics technician.

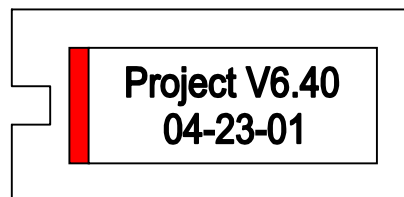
**Caution!**

**Caution!**

**Caution!**

Make sure the circuit cards are properly seated by pressing the card cage back plane towards the cards before testing.

- 1) **Turn system off.** Remove cover from power supply.
- 2) Identify EPROM on microprocessor board (smallest of the boards in the printed circuit board rack.)
- 3) The EPROM can be identified by the white label with the file name, version number, and date on it.
- 4) Remove EPROM by placing small blade screwdriver between the chip and its socket while gently prying up until the chip is fully out its socket.
- 5) Note the notch on one end of the EPROM socket.
- 6) Carefully line new EPROM in the socket with RED line on the label facing the same side as the notch in the socket.



- 7) Make sure all the pins of the chip are fully seated in the socket.
- 8) Turn on power,
- 9) **IMPORTANT!** Press the small red reset button on the outside of the power supply chassis. This must be done so the processor can read the newly installed program on the EPROM.
- 10) Check the system for the correct program.
- 11) If you have any questions concerning this installation, call Varitronics at 1-800 345 1244.